

GA150 系列可更换模块

/// 温控系列

温控系列



///D1



///D2



///D3



///D4



///D5



///D6



///D7



///D8



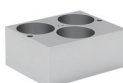
///D9



///D10



///D11



///D12



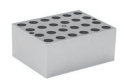
///D13



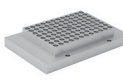
///D14



///D15



///D16



///D17



///D18

/// 可更换模块

| 型号 | 试管直径 | 试管数 | 模块尺寸 (W×D×H) | 型号 | 试管直径 | 试管数 | 模块尺寸 (W×D×H) |
|----|------|-----|-------------------|-----|-----------|---------|-------------------|
| D1 | 6mm | 48 | 96.5×76.5×50 (mm) | D10 | 26mm | 8 | 96.5×76.5×50 (mm) |
| D2 | 7mm | 48 | 96.5×76.5×50 (mm) | D11 | 28mm | 6 | 96.5×76.5×50 (mm) |
| D3 | 10mm | 24 | 96.5×76.5×50 (mm) | D12 | 40mm | 3 | 96.5×76.5×50 (mm) |
| D4 | 12mm | 24 | 96.5×76.5×50 (mm) | D13 | 0.2ml 离心管 | 48 | 96.5×76.5×50 (mm) |
| D5 | 13mm | 24 | 96.5×76.5×50 (mm) | D14 | 0.5ml 离心管 | 48 | 96.5×76.5×50 (mm) |
| D6 | 15mm | 12 | 96.5×76.5×50 (mm) | D15 | 1.5ml 离心管 | 24 | 96.5×76.5×50 (mm) |
| D7 | 16mm | 12 | 96.5×76.5×50 (mm) | D16 | 2.0ml 离心管 | 24 | 96.5×76.5×50 (mm) |
| D8 | 19mm | 12 | 96.5×76.5×50 (mm) | D17 | 0.2ml | 96 | 96.5×76.5×50 (mm) |
| D9 | 20mm | 12 | 96.5×76.5×50 (mm) | D18 | 平板 | 96 孔酶标板 | 96.5×76.5×50 (mm) |