



D1A



D2A



D3A



D4A



D5A



D6



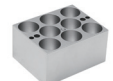
D7



D8



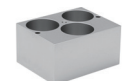
D9



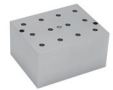
D10



D11



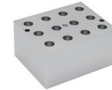
D12



D13A



D14A



D15A



D16A



流量调节阀

模块信息

型号	试管直径	试管数	模块尺寸 mm	型号	试管直径	试管数	模块尺寸 mm
D1A	6 mm	12	96.5X76.5X50	D9	20 mm	12	96.5X76.5X50
D2A	7 mm	12	96.5X76.5X50	D10	26 mm	8	96.5X76.5X50
D3A	10 mm	12	96.5X76.5X50	D11	28 mm	6	96.5X76.5X50
D4A	12 mm	12	96.5X76.5X50	D12	38mm	3	96.5X76.5X50
D5A	13 mm	12	96.5X76.5X50	D13A	0.2ml 离心管	12	96.5X76.5X50
D6	15 mm	12	96.5X76.5X50	D14A	0.5ml 离心管	12	96.5X76.5X50
D7	16 mm	12	96.5X76.5X50	D15A	1.5ml 离心管	12	96.5X76.5X50
D8	19 mm	12	96.5X76.5X50	D16A	2ml 离心管	12	96.5X76.5X50

仪器常规配置

可选配流量调节阀。